

# Picture Perfect Mini Art Lights



**Style:** A high CRI lensed LED centred in a discreet 65mm head offering great canvas coverage on smaller works of art using an appropriate lens and arm to offer great canvas coverage

**IP Rating:** IP20 (Indoor Use Only)

**Construction:** Extruded Aluminium (or Brass for Brass Options)

**Finish:** PA / PB / SS / SB / CG / ARB / ANB / BK / WH  
Custom finishes including RAL colours and anodised plate finishes available upon request

**Head Cross Section:** 27mm x 27mm

**Head Length:** 65mm

**Arm Diameter:** 6mm

**Arm Length:** Small / Medium / Long / Custom

**Arm Style:** Classic / Traditional / Straight / Custom

**Arm Number:** 1 Arm

**Swivel Knuckle:** To allow a 90 degree Tilt

**Mounting Hardware:** Wall / Frame Mount - Classic / Traditional / Custom Arm (1)  
Rectangular / Round - Straight Arm (2 - 3)

**Power:** 24V Constant Voltage for both dimming and non-dimming options

**Dimming Protocol:** 0 - 10V, 1 - 10V, Dali, Lutron or Phase

**Light Source:** 1.9W lensed LED to cover canvas

**Colour Temperature:** 2,700K (as standard) and 3,000K upon request

**Colour Rendering:** 98 CRI typical

**Beam Angles:** 15 / 30 / 40 / 45 / 60 selected to give great coverage over the full canvas

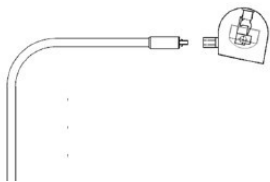
**LED Life:** 50,000 hours

## Head Profile

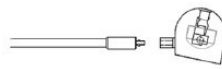


27mm high x 27mm wide

## Arm Options:



**Classic Arm**  
Short / Medium / Long



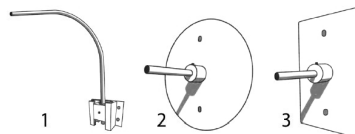
**Straight Arm**  
Short / Medium / Long

## Finish Options:



**PA** Polished Aluminium **PB** Polished Brass **SS** Satin Brushed Steel **SB** Satin Brushed Brass **CG** Classic Old Gold **ARB** Architectural Bronze **ANB** Antique Bronze **BK** Black **WH** White Other finishes available.

## Mounting Hardware:



1. Wall or Frame (reversed) Mount – Classic Arm
2. Round Wall Mount – Straight Arm
3. Rectangular wall Mount – Straight Arm