

# Picture Perfect Contemporary Art Lights

<b>Style:</b>	High CRI lensed LEDs mounted in fixed positions in a modern and minimalistic style allowing for a great canvas coverage with no damaging heat or UV emissions
<b>IP Rating:</b>	IP20 (Indoor Use Only)
<b>Construction:</b>	Extruded Aluminium (or Brass for Brass Options)
<b>Finish:</b>	PA / PB / SS / SB / CG / ARB / ANB / BK / WH Custom finishes including RAL colours and anodised plate finishes available upon request
<b>Head Cross Section:</b>	15mm x 18mm
<b>Head Length:</b>	Sized specifically for canvas coverage (150mm - 3,000mm) Larger sizes available upon request
<b>Arm Length:</b>	Small / Medium / Long / Custom
<b>Arm Style:</b>	Classic / Traditional / Straight / Custom
<b>Arm Number:</b>	150 - 650mm - 1 Arm 660 - 3,000mm - 2 Arms
<b>Swivel Knuckle:</b>	To allow a 90 degree Tilt
<b>Mounting Hardware:</b>	Wall / Frame Mount - Classic / Traditional / Custom Arm (1) Rectangular / Round - Straight Arm (2 - 3)
<b>Power:</b>	Low Voltage Constant Current for both dimming and non-dimming options
<b>Dimming Protocol:</b>	0 - 10V, 1 - 10V, Dali, Lutron or Phase
<b>Light Source:</b>	Multiples of 1.9W lensed LEDs sized to canvas
<b>Colour Temperature:</b>	2,700K (as standard) and 3,000K upon request
<b>Colour Rendering:</b>	98 CRI typical
<b>Beam Angles:</b>	15 / 30 / 40 / 45 / 60 selected and spaced to give great coverage over the full canvas
<b>LED Life:</b>	50,000 hours

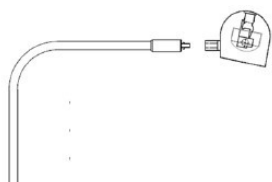


**Head Profile**



15mm high x 18mm wide

## Arm Options:



**Classic Arm**

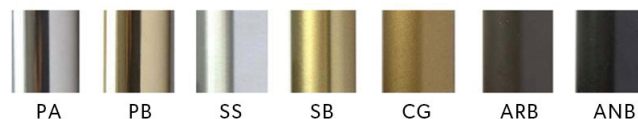
Short / Medium / Long



**Straight Arm**

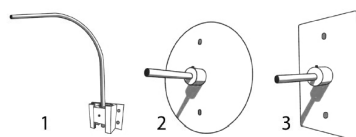
Short / Medium / Long

## Finish Options:



**PA** Polished Aluminium **PB** Polished Brass **SS** Satin Brushed Steel **SB** Satin Brushed Brass **CG** Classic Old Gold **ARB** Architectural Bronze **ANB** Antique Bronze **BK** Black **WH** White Other finishes available.

## Mounting Hardware:



1. Wall or Frame (reversed) Mount – Classic Arm
2. Round Wall Mount – Straight Arm
3. Rectangular wall Mount – Straight Arm

## Head & Arm Assembly

1 Arm	150 – 650mm
2 Arms	660 – 3000mm
Arm Diameter	6mm

