

Picture Perfect Mini Art Lights



Style: A high CRI lensed LED centred in a discreet 65mm head offering great canvas coverage on smaller works of art using an appropriate lens and arm to offer great canvas coverage

IP Rating: IP20 (Indoor Use Only)

Construction: Extruded Aluminium (or Brass for Brass Options)

Finish: PA / PB / SS / SB / CG / ARB / ANB / BK / WH
Custom finishes including RAL colours and anodised plate finishes available upon request

Head Cross Section: 27mm x 27mm

Head Length: 65mm

Arm Diameter: 6mm

Arm Length: Small / Medium / Long / Custom

Arm Style: Classic / Traditional / Straight / Custom

Arm Number: 1 Arm

Swivel Knuckle: To allow a 90 degree Tilt

Mounting Hardware: Wall / Frame Mount - Classic / Traditional / Custom Arm (1)
Rectangular / Round - Straight Arm (2 - 3)

Power: 24V Constant Voltage for both dimming and non-dimming options

Dimming Protocol: 0 - 10V, 1 - 10V, Dali, Lutron or Phase

Light Source: 1.9W lensed LED to cover canvas

Colour Temperature: 2,700K (as standard) and 3,000K upon request

Colour Rendering: 98 CRI typical

Beam Angles: 15 / 30 / 40 / 45 / 60 selected to give great coverage over the full canvas

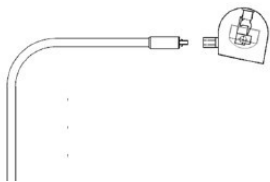
LED Life: 50,000 hours

Head Profile

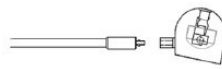


27mm high x 27mm wide

Arm Options:



Classic Arm
Short / Medium / Long



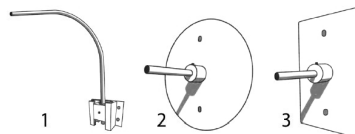
Straight Arm
Short / Medium / Long

Finish Options:



PA Polished Aluminium **PB** Polished Brass **SS** Satin Brushed Steel **SB** Satin Brushed Brass **CG** Classic Old Gold **ARB** Architectural Bronze **ANB** Antique Bronze **BK** Black **WH** White Other finishes available.

Mounting Hardware:



1. Wall or Frame (reversed) Mount – Classic Arm
2. Round Wall Mount – Straight Arm
3. Rectangular wall Mount – Straight Arm