

Picture Perfect Art Lighting

When lighting artwork there are many factors to consider to gain the perfect viewing experience and light the entire canvas well.

There are various light sources available to do this, however using an adaptable and maintainable lensed LED system is by far the best option. Historically, halogen lamps and tungsten filaments have been used but with the development of LEDs over the last 10 years this is the way to go now.

High CRI lensed LEDs will remove damaging heat and UV whilst extending the life by up to 50X longer, giving a greater coverage, bringing out the richer colours and increasing the texture & definition in your art. Not all LED Art Lights are the same and I will go through the key points that need to be considered when selecting them.

Colour temperature

This is very important when lighting art. Most pieces should be lit with a 2700K warm white light to bring out the rich colours within the piece. Cooler colour temperatures can be used, but these are rare.

Colour rendering index (CRI)

When lighting art you want to use the highest CRI that you can. 98 CRI is currently the highest LED level in the marketplace and will allow the rich reds and blues to show their true colours as well as adding depth and definition to your paintings.



LED lensing & spacing

This will be determined by the canvas dimensions with a spacing of up to 10" each with pre-selected lensing as required from say 15 through to 60 degrees to give a uniform coverage across the canvas. This will remove the points of glare, hotspots and low light levels experienced with older technology. Over illuminated areas will cause long-term damage to your painting.

Lighting levels

Dependent on the composition of the art, examples are sketches, water colours, oils, pastels and acrylics, different intensities of light will be required for each. An oil painting should be lit at <200Lux whereas a paper sketch should not exceed 50Lux. These can be controlled by dimming or other screening methods.



**"Good picture
lighting
makes such a
difference.
Only when
fine art is lit
correctly can
you truly fully
appreciate it"**



Picture surface

Artwork can be open to the elements or behind glass (standard or anti-glare). The position and angle of the head can remove all reflective points when lighting a painting with glass.

Art light head

The width of the head should not be more than 10-12" less than the canvas width to ensure the edges are lit. If it looks too small, it probably is. To the rear of the art light should be a swivel knuckle. This will allow the cowed front to conceal the light sources from view. Multiple art light heads can be used successfully to light very wide paintings although single heads of up to 120" are available from some suppliers if required.

Picture light head style

The two most popular styles are the fixed or variable position LED art lights with the variable giving greatest flexibility and thus a far superior coverage. This would have a rail system in and would allow lensed LEDs to be attached as required to light any canvas size.

Arms

Properly sized arms are required to position the head at the correct height and projection for the painting.

LED drivers

Careful selection and positioning is required here to ensure the driver runs at a low temperature and doesn't damage the artwork if attached to the frame.

Switching & Dimming

This can now be controlled by a wall switch, remotely or by an app (phone, tablet, etc.) and grouped by walls or rooms. Dimming can be achieved individually or as a group if required.

Picture Light Colours & Finishes

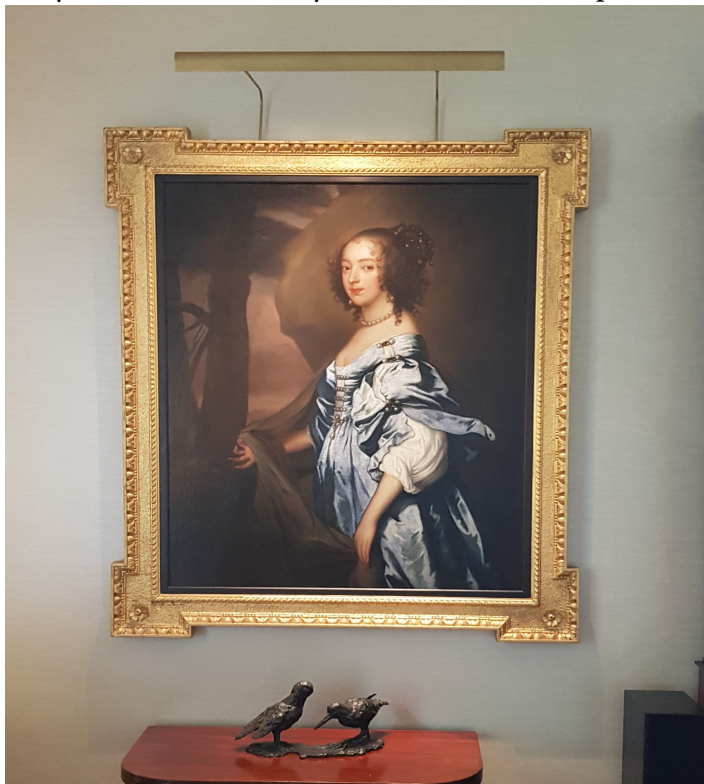
Many options are available, and your selection should complement your artwork.

To conclude, when art is lit correctly it makes such a difference.

There are many options available in the marketplace, but many do not consider all the above details. As you can see it is not easy to light a fine painting well. You need to consider how to cover the entire canvas evenly at the right intensity, not too bright, in the right colour temperature and with the highest colour rendition possible. All these points together will bring out the texture and rich colours in the artwork. Only when fine art is lit correctly can you truly fully appreciate it.

So many clients have told me that although they had looked at a painting for years, had never noticed a feature in the painting such as an animal, a facial expression, or some other hidden gem until it was lit well. This happens all the time and that is why it is so important to light your art correctly. Being able to see all those finer details within your painting will make you appreciate it even more.

You don't have to use art lights to light your art, but if you do, make sure you consider all these points.



Iain McIntosh

“With over 17 years of LED lighting experience, I know that Picture Perfect Art Lighting is always possible”



Contact Details
Heritage Lighting Matters Ltd

37 Henley Fields, Maidstone
Kent ME14 5UY

07793 581314

iain@heritagelightingmatters.com
heritagelightingmatters.com

PICTURE PERFECT ART LIGHTING

Full canvas coverage whatever the size or shape*



11" X 15"



18" X 22"



60" X 80"



30" X 24" (Oval)



50" X 40"

* Using our market leading modular high CRI lensed LED technology

Picture Perfect results every time:

Full canvas coverage • Complete uniformity • Highest level of definition
& resolution • No damaging UV • No damaging heat from the lamps •
Reduced running costs • Reduced maintenance costs

Over the years Iain has supported many heritage groups including:



For further information call Iain McIntosh on +44(0) 779 358 1314

Email: iain@heritagelightingmatters.com / Website: www.heritagelightingmatters.com

