



MAKE YOUR ART STAND OUT FOR ALL THE RIGHT REASONS

by Iain McIntosh

There are now many types and styles of lighting to bring your paintings to life, but the principles behind them should always be the same. When lighting art, ensure the following points have been included. The key factors required to light art will remain the same for whichever of the lighting styles are used. In a nutshell, they are as follows:

Colour temperature

Use a warm white colour, 2700K is the optimum for most paintings.

Colour rendering

This needs to be >95 to bring out the rich colours and textures in your art, and currently the highest level of CRI for LEDs is 98. Some LEDs are only 80 CRI.

LED number and lensing

This will be dependent on the content of the painting, its dimensions and the position of the light source.

Light coverage

To cover either the full canvas or full canvas and frame, as required (your personal choice).

Light level control

Individually controlled for each painting using a localised dimmer on each picture light.

Glare removal

Correct selection of arm size and head angle will make all the difference.

Is in keeping with the room decor

Being discreet with respect to size, colour, style & finish.

Have you ever wondered why standing at a certain point and looking at a piece of art is perfect, and then you move to another point in the room, and it is all wrong? This is due to light glare and can be caused by light from a window, room light or light from your picture light.

Although you are limited on what you can do with external light from your window, you can remove and minimise light glare from your room light & picture light sources by reviewing the angle of incidence on your painting from each light source, as they will create an angle of reflection (or glare point).

On picture lights, the arm height and projection are key to gaining a soft graze of light across the canvas to cover it fully. Longer and higher is better for long paintings and shorter and lower for small paintings. One size does not fit all. The correct head size & arm dimensions will make all the difference in gaining the full canvas coverage and ultimately your viewing experience.

Individual controllability of each picture light is crucial. Many people control a wall of picture lights with a single dimmer switch. In principle, it seems fine to dim them all together, but each canvas is different, having different textures, colours, sizes, etc. and each will require a different light level. If you have 3 paintings on the wall; the first can be under lit, the second perfectly lit and the third over lit. With individual dimming, you can set the perfect light levels for each painting. Over lighting a painting can damage it.

When lighting art, there are a few options available now to gain the correct light levels. When choosing what is best for you, make sure you consider the following options:

- New LED Picture Lights
 - Style, size and finish
- Existing Halogen Picture Lights
 - Use Picture Perfect LED Upgrade Kits
- Remote Lighting
 - Use of remote Tracklights, Uplights or Downlights
- Framing Projectors
 - Recessed, Track or Surface Mounted options

You don't have to use picture lights to light your art, but if you do, make sure you consider all these points. If I can be of further assistance in helping you here, please do make contact.

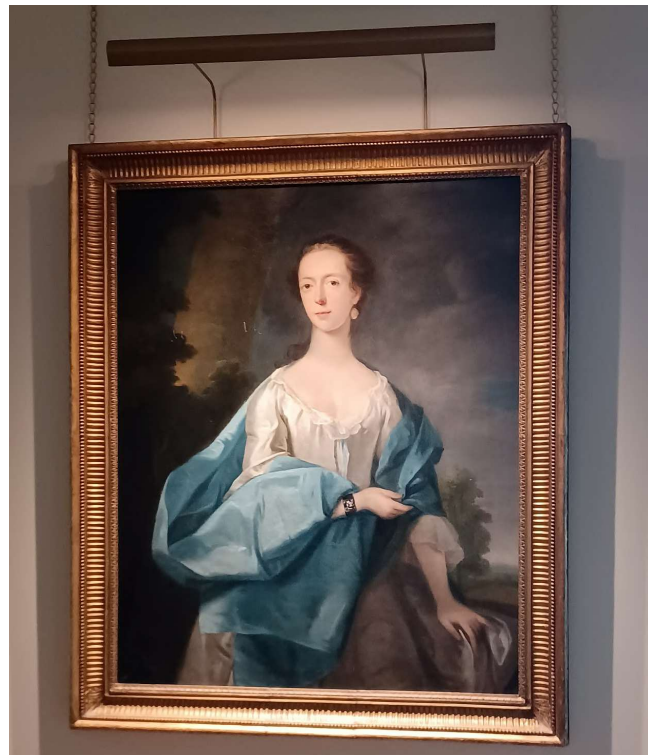
Contact Details:

Heritage Lighting Matters Ltd

T: 07793 581314

E: iain@heritagelightingmatters.com

W: heritagelightingmatters.com





Heritage Lighting
MATTERS

Picture Perfect Art Lighting



Trusted to light
the finest art

07793 581 314 / iain@heritagelightingmatters.com
www.heritagelightingmatters.com